



***Chips***  
***and***  
***Sawdust***

---

A quarterly newsletter from the

**Forest History  
Association of Wisconsin, Inc.**

P.O. Box 424  
Two Rivers, WI 54241-0424

Summer 2014

## Officers and Directors 2013—2014

---

**Sara Witter Connor** <sup>(2013)</sup>

*President*

P.O. Box 366  
Laona, WI 54541  
(406) 249-7781

[swcn6488sc@aol.com](mailto:swcn6488sc@aol.com)

**Bob Walkner** <sup>(2014)</sup>

*Treasurer*

3103 Maplewood Road  
Two Rivers, WI 54241  
(920) 793-4010

[anvils@charter.net](mailto:anvils@charter.net)

**David Peschau** <sup>(2013)</sup>

*Secretary*

100 N. Sixth Street  
LaCrosse, WI 54601  
(608) 788-7415

[dpeschau@compuserve.com](mailto:dpeschau@compuserve.com)

**Don Schnitzler** <sup>(2014)</sup>

*Vice-president*

301 S. Cedar Avenue  
Marshfield, WI 54449  
(715) 387-4044

[Schnitzler.donald@charter.net](mailto:Schnitzler.donald@charter.net)

**Michael Sohasky** <sup>(2014)</sup>

1435 Neva Road  
Antigo, WI 54409  
(715) 627-4025

[sohasky@frontier.com](mailto:sohasky@frontier.com)

**Tom Jacobs** <sup>(2015)</sup>

Domtar Paper Inc., LLC  
200 North Grand Avenue  
Rothschild, WI 54474

[Thomas.Jacobs@domtar.com](mailto:Thomas.Jacobs@domtar.com)

**Robert Brisson**

N529 River Drive  
Menominee, MI 49858-9402  
(906) 863-6850

[rbrisson@new.rr.com](mailto:rbrisson@new.rr.com)

Forest History Association of Wisconsin members interested in serving as a member of the FHAW Board of Directors should submit their name, a brief biographical sketch, and contact information to:

FHAW Nominating Committee Chairman, David Peschau  
[dpeschau@compuserve.com](mailto:dpeschau@compuserve.com)

# Chips and Sawdust

Volume 39, Number 2

## Table of Contents

From the President's Chair.....	pages 4 - 5
Eastern Continental Divide .....	pages 6 - 8
Fixmer & Connor Award Recipients Named.....	page 8
Newspaper Archives "Last Log Drive".....	pages 9 - 10
Taylor County Pictorial History.....	page 10
Upcoming FHAW Conference at Goodman.....	page 11
• Meeting Schedule at a Glance.....	page 12
• Meeting Registration Form.....	page 13
Membership Application.....	page 14
Board and Committee Members.....	pages 2 & 15



**Keep your mailing address up to date!  
Your e-mail address too!**

***Be sure to send both to  
membership chairperson  
Bob Walkner at  
[anvils@charter.net](mailto:anvils@charter.net)***

**Advantages:**

- Early electronic delivery of *Chips and Sawdust* Newsletter
- Newsletter with full-color photographs
- Monthly electronic FHAW news brief, *Woodchips*



## From The President's Chair

*Dear Friends,*

*The 4th of July was glorious! Not a cloud in the sky, huge logging trucks in the parade, and family – does not get any better than that!*

*The days are flying by as summer weather is variable and the mosquitos are abating – somewhat! As we look forward to the 39th FHAW Annual Conference in Goodman in early September, check out the FHAW Website, Facebook, and or "Chips and Sawdust" for registration information. See you there!*

*FHAW was represented at the April Great Lakes Timber Professionals Association (GLTPA) Spring Meeting in a s-n-o-w-s-t-o-r-m at Escanaba, Michigan.*

*The FHAW "Wisconsin Logging History" exhibit is on display for the 40th Anniversary of the Wisconsin Forestry Museum / Camp 5 Museum in Laona for the summer. A tribute to Mary R. Connor, a co-founder of FHAW and her husband, Gordon R. Connor – Congratulations to the Camp 5 Museum Foundation!*

*"Wisconsin Logging History" will also be on display at the Trees for Tomorrow "Forest Fest" on August 2nd in Eagle River. If you are up north, come and visit!*

*With new books, come new friends! "Buckshot" Andersen was at Camp 5 with his newest fishing book, but his logging book about his grandfather's early company in Hiles is worth the read – "Tall Timber, Tall Tales." It was published in the GLTPA magazine this spring and summer too.*

*If you are in the Park Falls area, Gerald Brillhart's "Winter-green Reflections: A History of Wintergreen Lake in Wisconsin" is available from our friends at the Price County Historical Society! "Jerry" is a fishing guide and Viet Nam Veteran as a Helicopter Gunner with three years "in country."*

*We all had such a wonderful visit in Park Falls last fall! I was there again in June, where I met Tess Morrison, author of women's fiction books – one about a logging family, "Moonlight Bay" is the second book to read cover to cover! Her grandfather worked on the Roddis Line in Park Falls. Generations meet again!*

*As a fundraiser for the Land O'Lakes Historical Society, there are four wonderfully illustrated children's stories for early readers – and your grandchildren, written and illustrated by local artist, Marilyn Annin.*

*We missed a visit last fall to FHAW member, John Boetcher's art studio in the Fifield/Park Falls area. His art work, logging prints, and nature prints are outstanding and beautiful!! If you are in the area, give him a call to see some of his work. He will also have some of his art pieces for auction at the upcoming FHAW Fall Conference. John is a WWII Veteran of the Pacific. It was D-Day plus one, plus 70 years, when he arrived at the Price County Historical Society during a June author event and we met in person! Thank you for your Service! I was very glad for our visit!*

*Three years ago, Miles Benson came to a Board Meeting, got lost in the woods and was rescued by fellow foresters and board members. A forester with vast experience, a brilliant mind, and longtime friend to all in FHAW, he is wandering in his memories. Hard on his family to watch, please send words of encouragement to his family. Support your local Alzheimer charity to cure this dreadful disease!*

*A shout out to Helen Baumann, who keeps Carl in line and deserves lots of Pink Ribbons!!*

*Finally, "it will never work," WORKS!! We can report that over 80 per cent of our members have an email address!! Those members are receiving "Chips and Sawdust" and "Woodchips" electronically. If you want to keep up with your family, grandchildren (and the twelve year old operating and fixing your computer), you can also see FHAW on Facebook to see photos and get news, too!!*

*The Board of Directors will be meeting soon. Please contact us with ideas. Hope to see you at Goodman in September for the conference!*

*Sincerely,  
Sara*



**TreesForTomorrow.com**

519 Sheridan Street East • Eagle River, WI • 715.479.6456

# EASTERN CONTINENTAL DIVIDE

By Brad Pagels

On the Wisconsin Highway Map is a fine dashed line which bisects the state in a serpentine fashion. This line indicates the divide between the Great Lakes and Mississippi River watersheds or drainage systems. It is by no means a definite ridge that separates the basins but that by looking at maps one may see how the waterways flow away from either side of this line.

In Harvey Huston's book titled, "The Thunder Lake Narrow Gauge," the author wrote a few sentences about how the main line of this logging railroad crossed the Divide in Forest County near Butternut Lake in the Nicolet National Forest.

*John D. Mylrea collection  
— A cut 32 feet deep  
carried the Narrow  
Gauge across the divide  
between the Great Lakes  
and Mississippi River  
drainage systems, about  
1 mile northeast of  
Camp 13.*



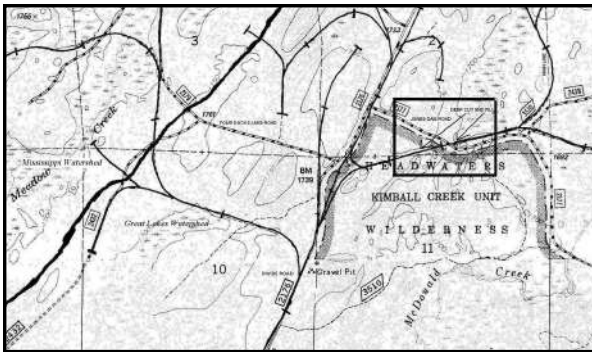
*John D. Mylrea collection  
— This picture shows the  
same cut in the distance  
with a long 32-ft fill ad-  
joining in the fore-  
ground. The cut and fill  
were part of a mile-long  
1–2% grade.*



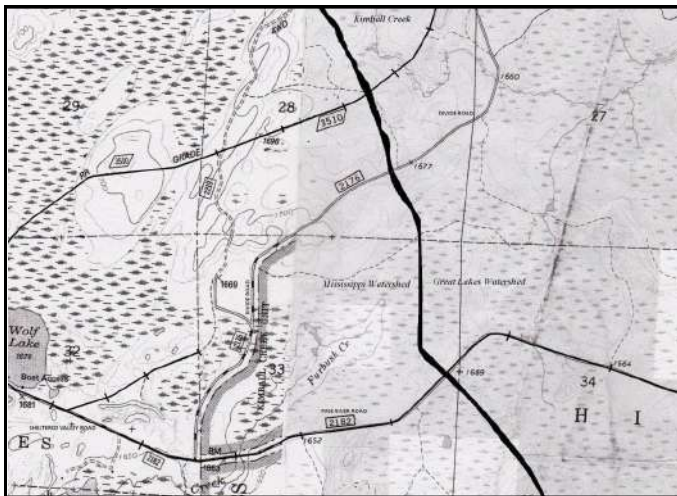
This cut and fill is in excellent condition today, however this is not where the Divide is located. Rather the railroad crossed it about three-and- one-half miles south of this point in the NW SE ¼ of Section 28, Township 39 North, Range 12 East.



*This is a view of the big cut looking south from Jones Dam Road.*



*The square on this map shows where the cut and fill were photographed.*



*The two main lines of Thunder Lake's Narrow Gauge Railroad crossed the Divide at two points where it was hardly noticeable. The north main line was built through rougher terrain and the crossing over Jones Dam Road was a very challenging feat of railroad construction.*

*The Main Line at Kimball Creek:  
This rail corridor is now a snowmobile trail and the view is looking south from the creek which flows into the Great Lakes drainage basin.*



*The photo was made about 900 feet south of Kimball Creek and it is a good guess that this point is on the Continental Divide as the rail bed descends to the south. Looking north from here the grade descends to Kimball Creek.*

## **Fixmer Award and Connor Award Recipients Named**

During the upcoming FHAV Annual Meeting at Goodman, Wisconsin, two award presentations will be made following the noon luncheon on Friday, September 12th at the Goodman Club.

The Fixmer Award, given annually to individuals for their contributions to an organization will be presented to Dr. Larry Severeid and Fred Funk, for their efforts for the Hixton Forest Preserve in LaCrosse. The Fixmer Award was named to honor FHAV co-founder and longtime forester, Frank Fixmer.

The Connor Award, given to an organization for outstanding contributions to forest history will be given this year to the Kretz Lumber Company of Antigo. The Kretz Forest Family maintains the Ray Kretz Industrial Forest, a working forest providing many educational opportunities for the public; including the Kretz Forest Family Landowners' Forestry Field Day and the Kretz Forest Family Management Plan.





## *From the Newspaper Archives*



### **LAST OF BIG LOG DRIVES ON THE MENOMINEE IS DOWN**

*(from the Daily Leader, Grand Rapids Wisconsin July 18, 1917)*

Marinette, Wis., July 18—The logging and lumbering days of the Menominee River, one of the most famous streams of its kind in the country, virtually are over, after more than a half century of driving and manufacturing.

The last of the annual log drives, comprising approximately 12,000,000 feet—which is only about one-third of the cut of the largest Menominee River sawmills when this industry was at its height—has just reached here. There will be a few logs coming down the river in the future, but they will be driven by local lumber companies and will consist principally of pulpwood. This year's drive is the smallest in the history of the Menominee River Boom Company.

The five remaining sawmills in Marinette and Menominee will, in the future, have all their timber brought in by rail, the last of the logs tributary to the local stream having been put in.

The first logs on the Menominee River were driven by the Menominee River Boom Company in 1868. In that year 62,809,804 feet were piloted from the upper waters to the local booms. Last year the total was approximately 15,991,850 feet.

During the period from 1868 to 1916 inclusive, the total number of logs driven down the Menominee River totaled approximately 10,810,341,028 feet. The exact total for this year is not yet known.



*The Menominee River is a river in northwestern Michigan and northeastern Wisconsin. It is approximately 116 miles (187 km) long, draining a rural forested area of northern Wisconsin and the Upper Peninsula of Michigan into Lake Michigan.*

The difference in the size of the logs is as notable as the difference in the total sorted. In 1889, the busiest year that the boom company ever had, the number of logs sorted was 642,137,850 feet. These logs averaged about 150 feet or seven to the thousand. Last year they averaged 38 feet, or about twenty-seven to the thousand.

The Menominee river in its hey day was the greatest lumbering stream in the world.

## Land O' Lakes Historical Society — Northern Waters Museum

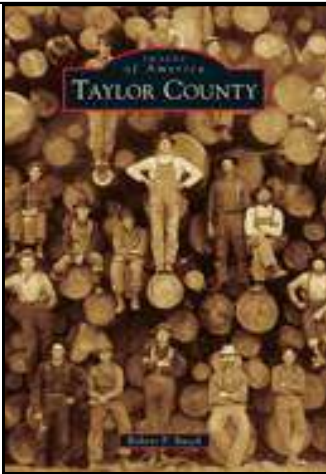
6490 Chippewa Drive Land O' Lakes, WI 54540

Museum open  
July and August  
From 11AM to 3PM Thurs, Fri,  
and Sat.

Tel: 715-547-6979  
[info@landolakeshistory.org](mailto:info@landolakeshistory.org)



Website: <http://www.landolakeshistory.org/>



*Series: Images of America*  
*Paperback: 128 pages*  
*Publisher: Arcadia Publishing*  
*(August 4, 2014)*  
*Language: English*  
*ISBN-10: 1467112445*  
*ISBN-13: 978-1467112444*  
*3 x 6.4 x 9.1 inches*

### Taylor County (Images of America)

Paperback  
by Robert P. Rusch

Arcadia Publishing, America's largest publisher of local histories, to release Taylor County, by Forest History Association of Wisconsin member, Robert P. Rusch, August 8th.

The book is a pictorial history with lots of images and text that should be of interest to fellow members of the Forest History Association of Wisconsin. Packed with lots of historic photos of sawmills, railroads and logging, the book also has a chapter on hemlock, the once dominant tree in Taylor County. The chapter includes hemlock river drives, the huge tanneries utilizing tan bark and the innovative and successful advertisement of hemlock lumber by building a prominent hotel exclusively from it.

Available for \$21.99 at  
[arcadiapublishing.com](http://arcadiapublishing.com)



## Forest History Association of Wisconsin 39th Annual Meeting September 11, 12, & 13 Goodman, Wisconsin

The 39<sup>th</sup> annual meeting of the Forest History Association of Wisconsin will take place in Goodman, WI September 11-13, 2014.

We will be staying at the Northland International University, W10085 Pike Plains Road, Dunbar, Wisconsin. A detailed map



*The Northland International University campus is nestled among 1,200 acres of the north woods of Wisconsin, about ninety minutes north of Green Bay and thirty minutes south of Iron Mountain, Michigan.*

will be sent to those who register. Registrations can be made by calling Tara Dunford at 715 324-6900, ext. 3003. Dormitory rooms with private baths are all located on the first floor. A Queen bed is \$75.00 per night and a Single rooms is \$50.00.

The Northland International University is a smoke and alcohol free campus.



*Each of Northland's comfortable guest rooms features a full or queen size bed made up with fitted and flat sheets, pillows, and comforters; some rooms also contain made bunk beds. These rooms also include bath towels, hand towels, and wash cloths for each occupant as well as a bath mat. Every guest room conveniently holds an iron and*

*ironing board, a suitcase stand, a desk and chair, a dresser, a lamp, and a wardrobe with space for hanging full-length garments. Several rooms also come with a microwave, a night stand, and an alarm clock.*



**FHAW 39th Annual Meeting  
Goodman, Wisconsin  
September 11–13, 2014**

**Schedule at a Glance**

**Thursday, September 11**

5 pm Four Seasons Island Resort

Miscauno Island, Hwy Z, Beecher, WI

Reception (cash bar), Dinner

Presentations:

- Al Ochs: *William Holmes Logging on the Menominee River*
- Dick McDougal: *Logging Deadheads*

Travel to Northland International University, Dunbar

**Friday, September 12**

Morning

7–8 am Northland International University, Dunbar

Breakfast

9 am Bus pick-up/departure for Goodman

Jeff Crago: *Tour Goodman Veneer and Lumber Company*

Bus to Goodman Club

Noon Lunch at Goodman Club

Business Meeting & Award Presentations

Afternoon

Presentations:

- Brad Pagels: *Goodman Railroads*
- Mike Cassidy: *History of Goodman*  
Bus to Goodman County Park
- George Hoffman: *Talk on Dunbar CCC*  
Bus to Goodman Club

Evening

Dinner & Auction: *Friday Night Fish Fry at Goodman Club*

Bus to Northland International University

**Saturday, September 13**

7–8 am Northland International University, Dunbar

Breakfast

9 am Presentations:

- Stuart Boren: *Marinette County Forestry*
- Carl Krog: *Summary*



# FHAW 39th Annual Meeting Registration Form



Name(s) \_\_\_\_\_  
\_\_\_\_\_

Address \_\_\_\_\_

City / State \_\_\_\_\_ Zip \_\_\_\_\_

Phone ( ) \_\_\_\_\_ E-mail \_\_\_\_\_

**Meeting Registration** (\$15) \$ \_\_\_\_\_

**Thursday, September 11, 2014** (\$30) \$ \_\_\_\_\_

Reception (cash Bar) & Dinner  
at Four Seasons Island Resort, Beecher, WI

**Friday, September 12, 2014**

Northland International University, Dunbar., WI

Breakfast 7 - 8 a.m. (\$5) \$ \_\_\_\_\_

Transportation (\$15) \$ \_\_\_\_\_

Lunch (Goodman Club) (\$12) \$ \_\_\_\_\_

Dinner (Fish Fry) & Auction  
at Goodman Club (\$15) \$ \_\_\_\_\_

**Saturday, September 13, 2014**

Northland International University, Dunbar, WI

Breakfast 7 - 8 a.m. (\$5) \$ \_\_\_\_\_

\* All prices include tax and gratuity Total: \$ \_\_\_\_\_

Any Special Dietary Considerations: \_\_\_\_\_



***Please Register by September 1, 2014***

**Make Checks Payable to FHAW and send to:**

Robert Walkner  
3103 Maplewood Road  
Two Rivers, WI 54241

# Forest History Association of Wisconsin, Inc.

## Membership Application

Please enroll me as a member and participant in the Association's program of developing the educational and historical aspects of Wisconsin's forestry and logging industry. Attached is payment for:

- \_\_\_\_\_ Student Membership (\$10.00)
- \_\_\_\_\_ Individual Membership (\$20.00)
- \_\_\_\_\_ Family Membership (\$30.00)
- \_\_\_\_\_ Non Profit Organization Membership (\$30.00)
- \_\_\_\_\_ Corporate Membership (\$55.00)
- \_\_\_\_\_ Individual Life Membership (\$250.00)

Other Contributions:

- \$ \_\_\_\_\_ Student Awards
- \$ \_\_\_\_\_ Capital Fund
- \$ \_\_\_\_\_ Operations



Name \_\_\_\_\_

Address \_\_\_\_\_

City \_\_\_\_\_ State \_\_\_\_\_ Zip \_\_\_\_\_

Phone Number \_\_\_\_\_

E-mail Address \_\_\_\_\_

Detach and mail this application with payment to:

**Forest History Association of Wisconsin, Inc.**  
**P.O. Box 424**  
**Two Rivers, WI 54241-0424**



## Committee Chairs

---

### 39th Annual Conference

*2014*

Goodman, Wisconsin

#### Membership

Bob Walkner

3103 Maplewood Road

Two Rivers, WI 54241

(920) 793-4010

anvils@charter.net

#### FHAW Website

Dan Giese

976 Coppens Road

Green Bay, WI 54303-3865

(920) 497-8236

#### Newsletter

Don Schnitzler

301 S. Cedar Avenue

Marshfield, WI 54449

schnitzler.donald@charter.net

#### Exhibits

### Publicity Committee

David Peschau

W5733 Sherwood Drive

LaCrosse, WI 54601

dpeschau@compuserve.com

### Annual Proceedings Editor

2011—Don Schnitzler

2012—David Peschau

2013 — Sara Connor

### Forestry Hall of Fame

#### Representative

Tom Jacobs

### Scholarship & Distinguished

#### Service Awards

Michael Sohasky

1435 Neva Road

Antigo, WI 54409

(715) 627-1025

sohasky@frontier.com

Awards Committee

Auction Committee

Archives

***Stay in Touch Throughout the Year***

***Like Us On Facebook***



[www.facebook.com/chipsandsawdust](http://www.facebook.com/chipsandsawdust)



Forest History  
Association of Wisconsin, Inc.  
P.O. Box 424  
Two Rivers, WI 54241-0424